



John Johnstone, President	Dr. John M. Beasley, Treasurer	Tina Holt, Director 3
Maria Santini, President Elect	Paul Wayne, Secretary	Scott Beasley, Director 2
Tad Keaton, Vice President		Sid Garner, Director 1
Tiffany Cope, Past President		Lynn Burns, Sergeant at Arms

ANNOUNCEMENTS and EVENTS

Thursday March 20 -- Golf Tournament
Friday March 21 -- No meeting
Friday March 21 -- TAF Workshop—see Heath
Friday March 28 — Society American Nosherie Fundraiser with Rotarians Bartending and Serving. Everyone come out, enjoy great dining, and leave some HUGE tips

June 6-7 -- District Conference Paris Landing State Park
June 6-7 — Tractor Pull and BBQ Cookoff
June 10 to 14th -- RYLA – Clarksville

LAST PROGRAM

Rotarians From Lawrenceburg and Neighboring Communities Pack 12,000 Meals To Feed The Hungry

80 Rotarians, family, and friends from Lawrenceburg and neighboring communities joined together at Lawrenceburg Rotary Park on Saturday, March 8, 2025 to assemble meal packets for distribution to the hungry. For the seventh consecutive year, the Lawrenceburg Rotary Club partnered with Rise Against Hunger, an international hunger relief organization that distributes food and life-changing aid to the world's most vulnerable. For the second year in a row, Rotarians from Pulaski, Waynesboro, and Columbia assisted with the event.

The project consisted of assembling dehydrated food packages containing rice, soy, mixed vegetables, and a vitamin packet capable of feeding up to six people. The Lawrenceburg Rotary Club purchased food and supplies through Rise Against Hunger which also provided workstations and guidance on how to efficiently package the items. Rise Against Hunger will consolidate locally assembled packages with output from similar events, then ship overseas to a disaster area or other sustainable program where food is needed.

Event coordinator Maria Santini stated "After participating in one of these events at our Rotary District Conference in 2018, I wondered if Lawrenceburg Rotary could do such a project on its own. Our club's Board agreed to fund the project and we found enthusiastic support from our club's membership". This has become an annual event for our club and we have packaged over 88,000 meals in the last seven years. Rotarians from Pulaski, Waynesboro, and Columbia assisted with this year's event".

The Lawrenceburg Rotary Club is a member of Rotary International, an organization consisting of 1.2 million Rotarians in over 46,000 clubs operating in 200 countries and regions across the globe. The local club manages the Middle Tennessee District Fair and numerous other projects in Lawrenceburg and Lawrence County, Tennessee.



For the Love of Rotary!
February 20, 2025 6pm

Give to Rotary Foundation and Humanitarian Fund! Appetizers & Cash bar

Lawrenceburg Golf & Country Club

Our Thursday night social on March 6 was themed "For the Love of Rotary." The function was rescheduled due to bad weather in late February. Lawrenceburg Rotarians generously donated \$1900 to the Humanitarian Fund and \$100 to RI Polio Plus. This also means that a club match of \$2000 went to The Rotary Foundation. Thank You to all Rotarians who have donated this year.

As a reminder, Club match has now exceeded budget and will be suspended until the new Rotary year beginning in July.

March 14 Meeting

Giles County Makers Market-Kariane Lam

Charitable Contributions Corner

Humanitarian Fund YTD - \$2370	Lawrenceburg Rotary PHF
--	--------------------------------

If bringing guest(s) to a Friday Rotary Meeting, please notify Donna Pack at (931) 242-3744 by Wednesday so that the appropriate number of lunches can be ordered.

If you find an error in attendance – Absent list, Make-Ups, or would like to know how you stand on attendance. – Please email rcbgrsec@gmail.com and I'll make the correction or let you know if you need to do a make-up. – Thanks, Paul





SCRAMBLE FOR HUMANITY GOLF TOURNAMENT

★ **MARCH 20, 2025** ★

SHOTGUN START 1PM

Lawrenceburg Golf & Country Club

1901 W.Gaines Lawrenceburg, TN



\$100 PER PLAYER

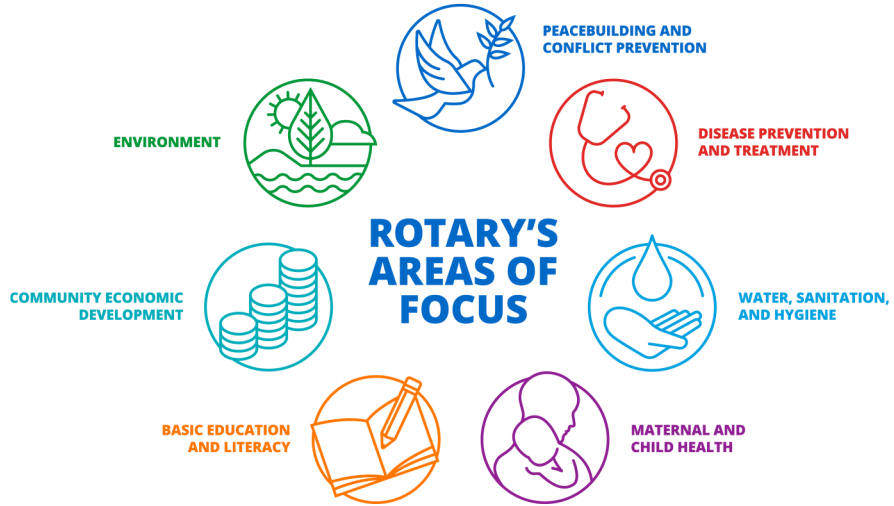
\$400 PER TEAM

CASH PRIZES

For registration contact golf shop: 931-762-2500

For sponsorships contact: Tiffany Cope 931-629-0293

ANNUAL FUND - AREAS OF FOCUS



EMPOWER THROUGH EDUCATION

Rotary members are creating community-driven, sustainable projects to improve access to quality education around the world. Your gift to The Rotary Foundation's Annual Fund supports these

